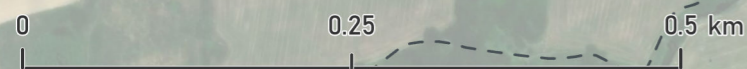
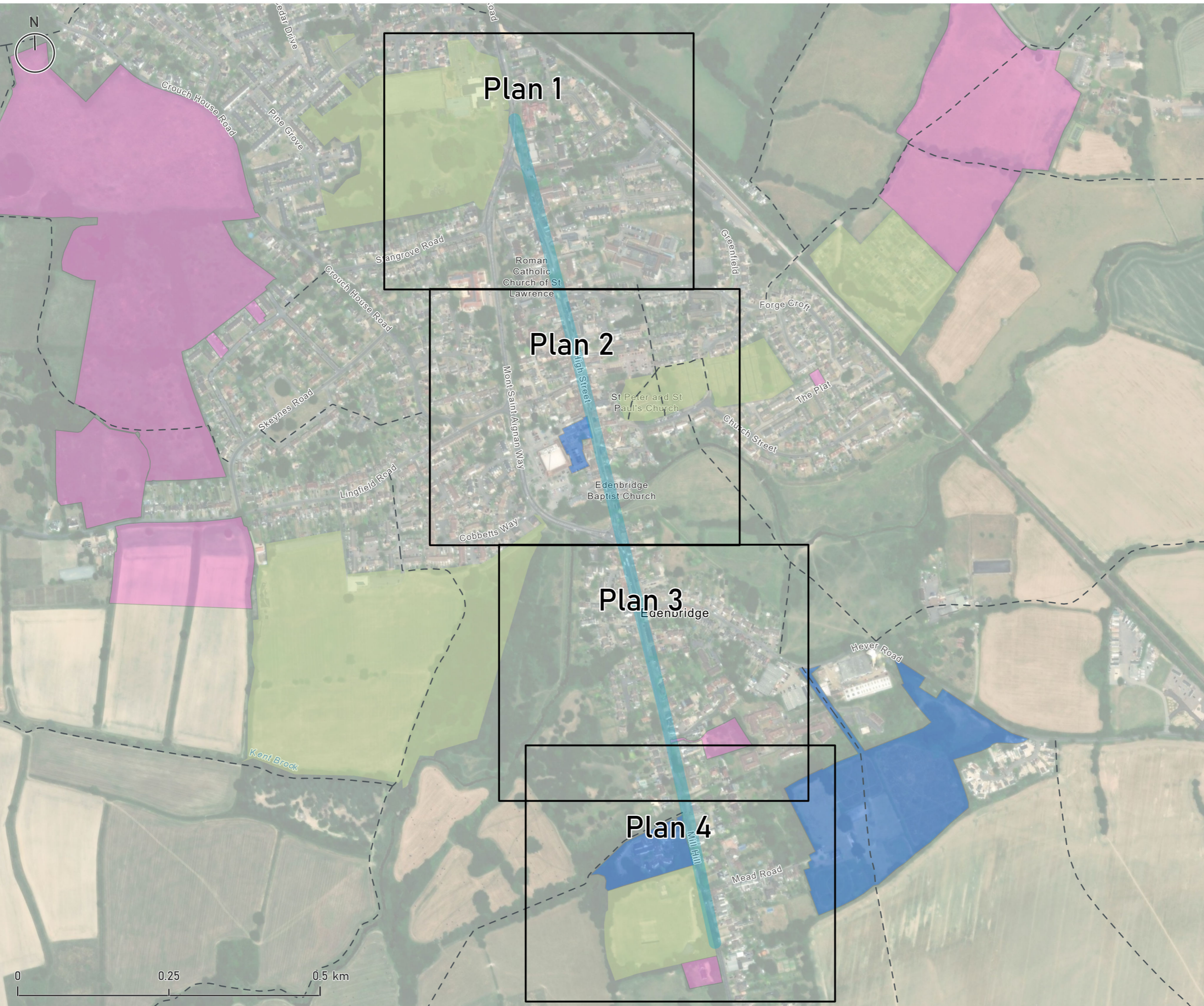


# Route 7 Overview Plan

-  Route Alignment
-  Public Right of Way (PRoW)
-  Potential housing sites (Local Plan Regulation 18, Autumn 2025)
-  Potential mixed use sites (Local Plan Regulation 18, Autumn 2025)
-  Green space



Contains Ordnance Survey data © Crown copyright and database right 2025  
Microsoft, Vantor

# Route 7 Design Recommendations - 01

- Route Alignment
- Public Right of Way (PRoW)
- Green space
- Design Recommendation (Point)**
- ♿ Accessibility improvement
- 🚶 Walking improvement
- 🚲 Cycling improvement
- Design Complexity (Point Recommendations)**
- Medium
- Low
- Design Recommendation (Linear)**
- Medium Complexity

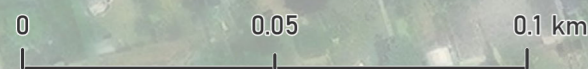
Provide improved controlled crossing to link proposed cycle tracks on Station Road with existing provision towards High Street.

Improve transition between cycle track and High Street through improved crossing.

Provide continuous footway treatment at junction.

Widen footways, potentially through removing on-street parking and extend 20mph speed limit.

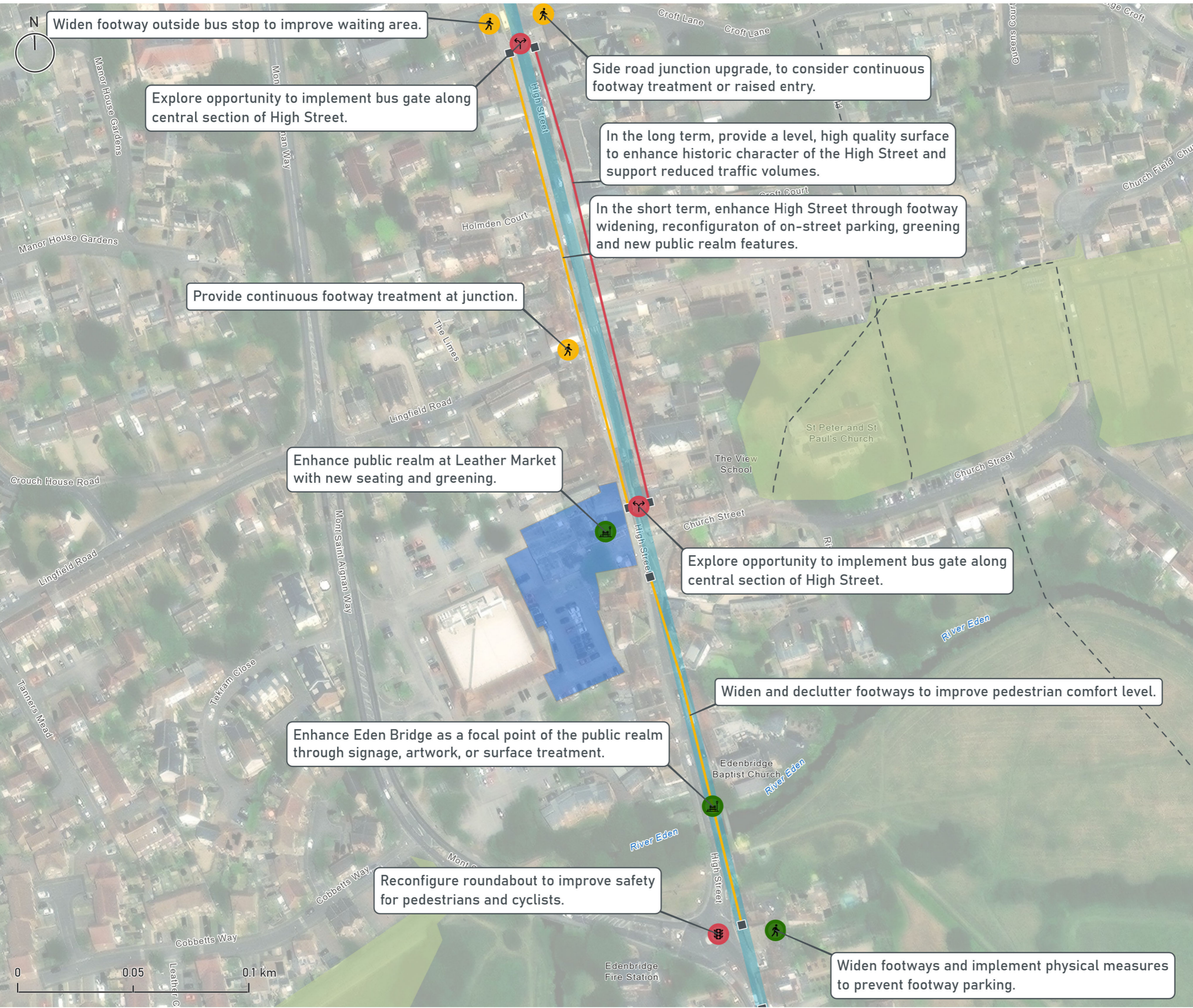
Review guard railing and A-boards to declutter footways.



Contains Ordnance Survey data © Crown copyright and database right 2025  
Microsoft, Vantor

# Route 7 Design Recommendations - 02

- Route Alignment
  - Public Right of Way (PRoW)
  - Potential mixed use sites (Local Plan Regulation 18, Autumn 2025)
  - Green space
- Design Recommendation (Point)**
- 🚶 Walking improvement
  - 🏡 Public realm improvement
  - 🚦 Traffic management
  - 🚦 Junction improvement
- Design Complexity (Point Recommendations)**
- High
  - Medium
  - Low
- Design Recommendation (Linear)**
- Medium Complexity
  - High Complexity



Contains Ordnance Survey data © Crown copyright and database right 2025  
Microsoft, Vantor

# Route 7 Design Recommendations - 03

-  Route Alignment
-  Public Right of Way (PRoW)
-  Potential housing sites (Local Plan Regulation 18, Autumn 2025)
-  Potential mixed use sites (Local Plan Regulation 18, Autumn 2025)
-  Green space
- Design Recommendation (Point)**
  -  Walking improvement
- Design Complexity (Point Recommendations)**
  -  Medium
  -  Low
- Design Recommendation (Linear)**
  -  High Complexity

Provide side road treatment, including raised table.

Tighten junction geometry to reduce crossing distance.

Where cycle tracks aren't feasible, reduce traffic speeds through narrowing of the carriageway and surface treatments.

Provide dropped kerbs and tactiles at junction



Contains Ordnance Survey data © Crown copyright and database right 2025  
Microsoft, Vantor



# Route 7 Design Recommendations - 04

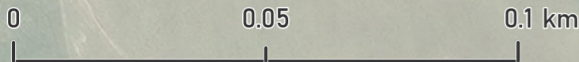
- Route Alignment
- Public Right of Way (PRoW)
- Potential housing sites (Local Plan Regulation 18, Autumn 2025)
- Potential mixed use sites (Local Plan Regulation 18, Autumn 2025)
- Green space
- Design Recommendation (Point)
  - Walking improvement
- Design Complexity (Point Recommendations)
  - Medium
  - Low
- Design Recommendation (Linear)
  - High Complexity

Tighten junction geometry and provide raised entry treatment.

Where cycle tracks aren't feasible, reduce traffic speeds through narrowing of the carriageway and surface treatments.

Provide new sections of footway linking to skate park and provide new crossing point.

Provide dropped kerbs and tactiles at junction



Contains Ordnance Survey data © Crown copyright and database right 2025  
Microsoft, Vantor