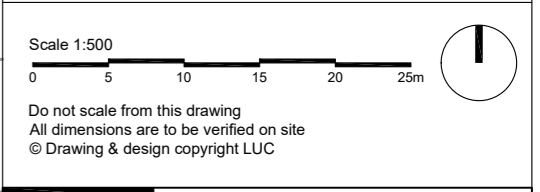




Key

- Site Boundary**
- Existing trees**
To be retained. Dashed line indicates Root Protection Area. Refer to RJC Consultancy drawing PJC/6816/25/X for tree retention plan
- Existing planting**
To be retained
- Existing shrubs**
To be retained
- Proposed marginal planting**
Refer to 13362-LUC-XX-XX-DR-L-0400 series for Soft Landscape Plan
- Proposed trees**
Refer to 13362-LUC-XX-XX-DR-L-0400 series for Soft Landscape Plan
- Proposed hedge planting**
Refer to 13362-LUC-XX-XX-DR-L-0400 series for Soft Landscape Plan
- Macadam**
Refer to 13362-LUC-XX-XX-DR-L-0200 series for Hard Landscape Plan
- Self binding gravel**
Refer to 13362-LUC-XX-XX-DR-L-0200 series for Hard Landscape Plan
- Stepping stones**
Refer to 13362-LUC-XX-XX-DR-L-0200 series for Hard Landscape Plan
- Bark mulch**
Refer to 13362-LUC-XX-XX-DR-L-0200 series for Hard Landscape Plan
- Resin Bonded Gravel**
Refer to 13362-LUC-XX-XX-DR-L-0200 series for Hard Landscape Plan
- Accessible eco-pavil**
Refer to 13362-LUC-XX-XX-DR-L-0200 series for Hard Landscape Plan
- F7**

PS3	01.12.20	Revised issue to include eco-pavil on key	MA	BS	BS
PS2	06.11.20	Final issue	MA	BS	BS
PS1	22.09.20	Draft issue	MA	BS	BS
Rev	Date	Description	Dim	CHK	App



Project
BRADBOURNE RE-BOURNE DEVELOPMENT PHASE

Client
Sevenoaks District Council

LUC Job No
13362 Scale @A1 Status
1:500 RIBA STAGE 3

Drawing Title
GENERAL ARRANGEMENT MASTERPLAN

Drawing No
13362-LUC-XX-XX-DR-L-0101 Rev
P03