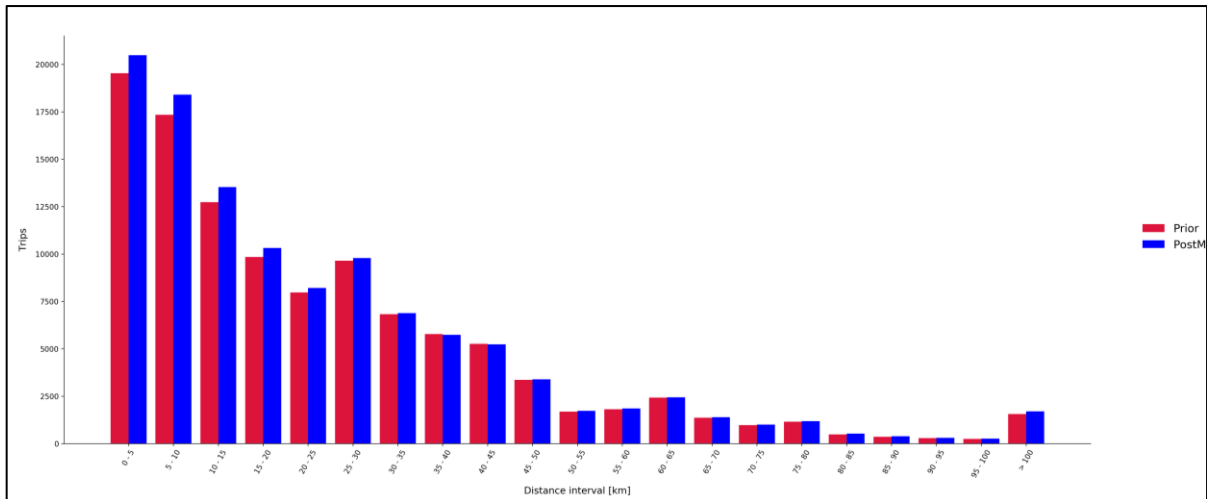


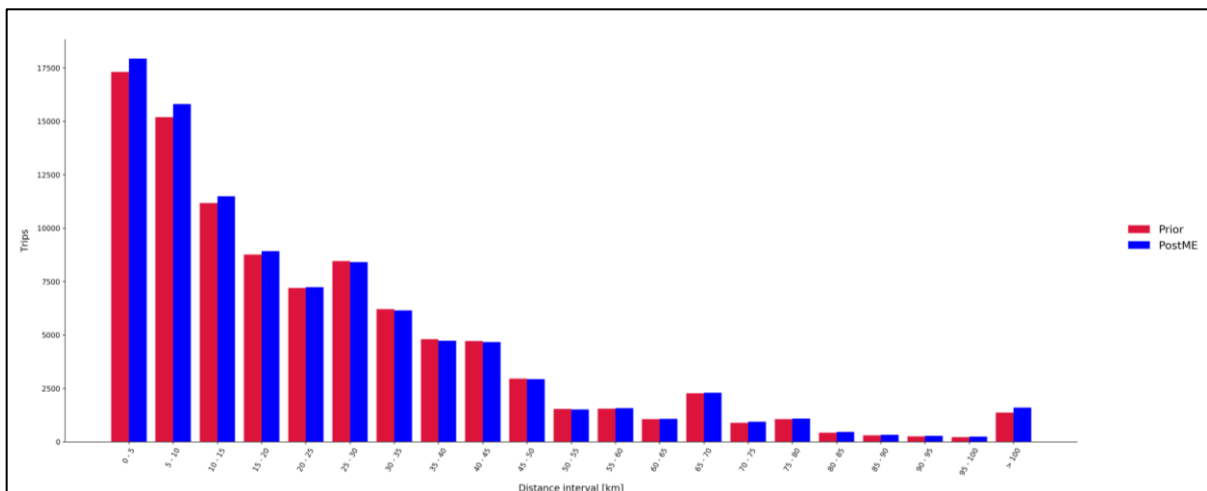
Appendix B. Trip Length Distribution

Car Commute Trips

User Class	Metric		AM	PM
Car Commute	Mean Travel Distance (km)	Prior	20.94	20.98
		PostME	20.97	21.17
		Difference	+0.1%	+0.9%
	Standard Deviation (km)	Prior	29.22	29.24
		PostME	29.94	30.35
		Difference	+2.5%	+3.8%



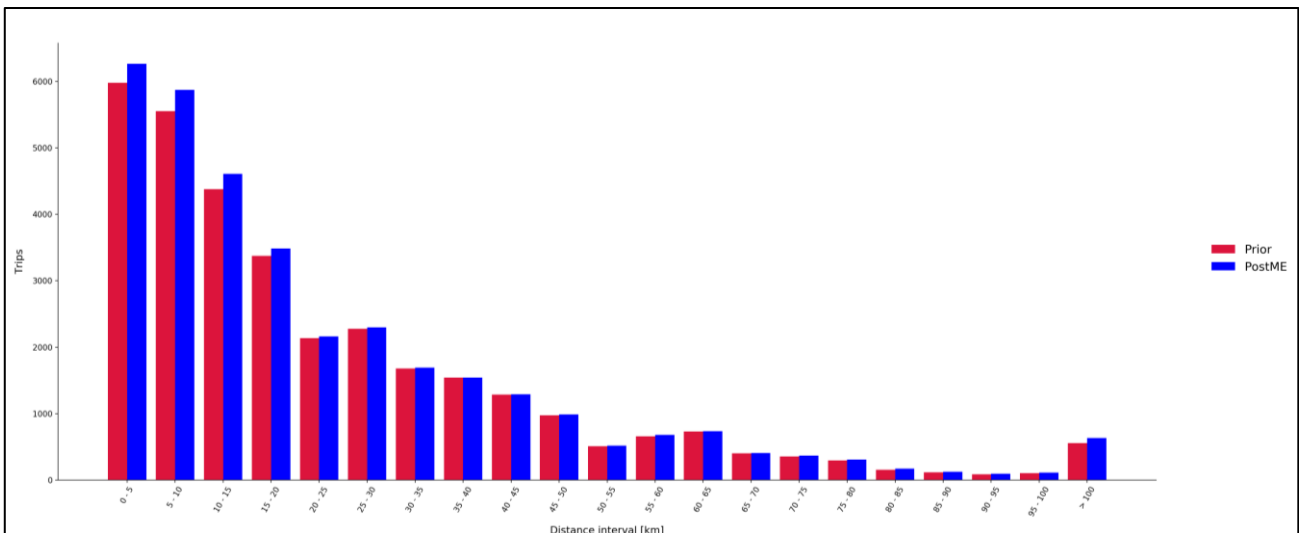
Trip Length Distribution Comparison Graph: AM - Car Commute Trips



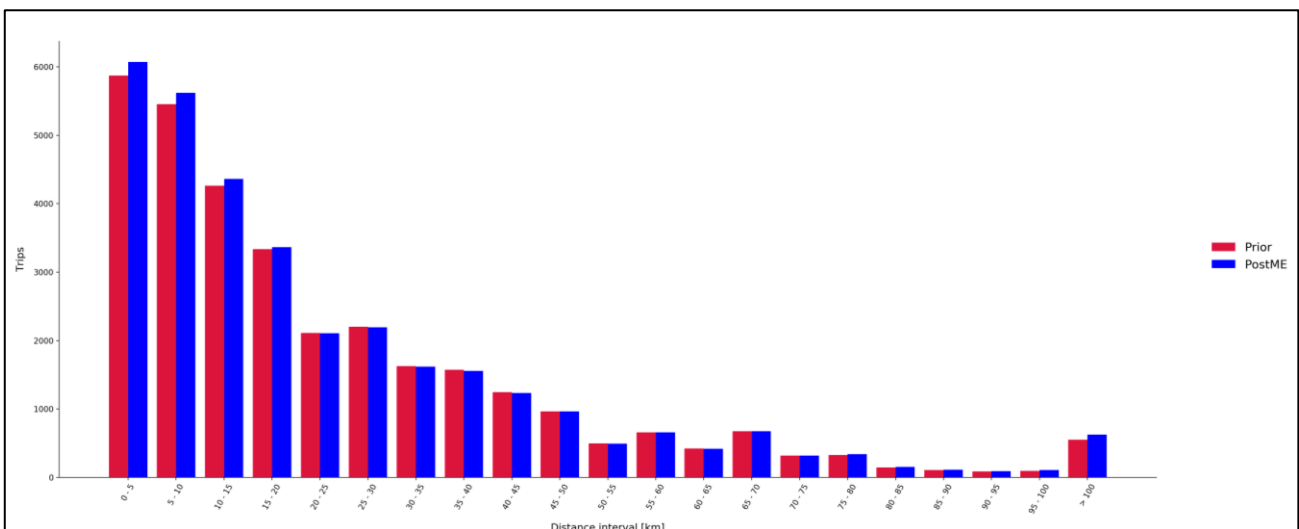
Trip Length Distribution Comparison Graph: PM - Car Commute Trips

Car Business Trips

User Class	Metric		AM	PM
Car Business	Mean Travel Distance (km)	Prior	20.60	20.61
		PostME	20.78	20.83
		Difference	+0.9%	+1.1%
	Standard Deviation (km)	Prior	35.65	35.82
		PostME	36.35	37.01
		Difference	+2.0%	+3.3%



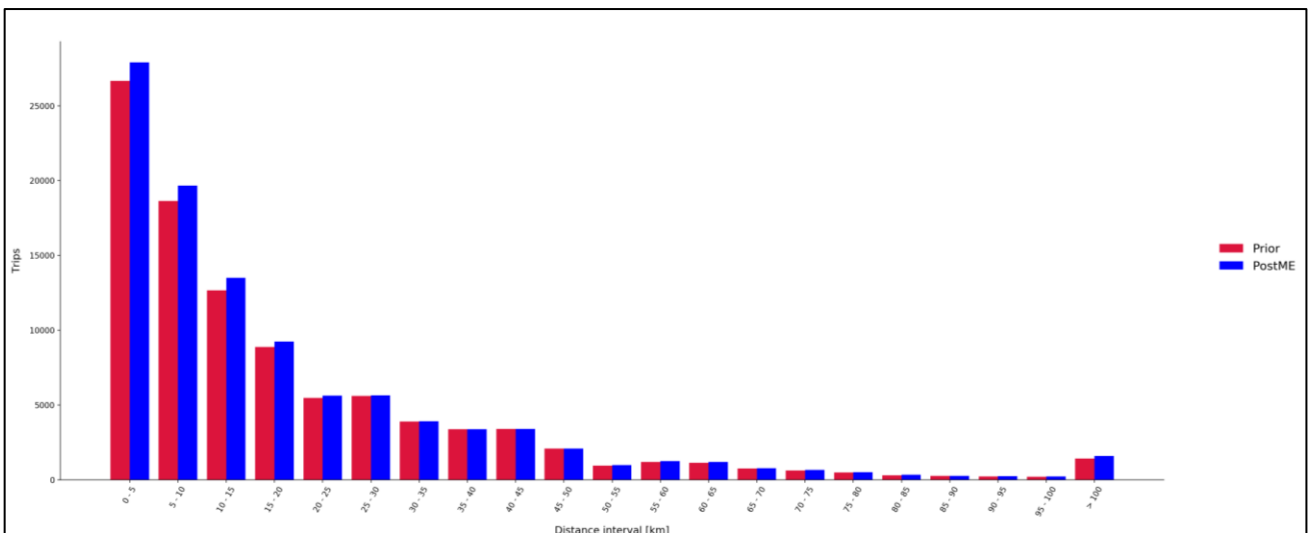
Trip Length Distribution Comparison Graph: AM - Car Business Trips



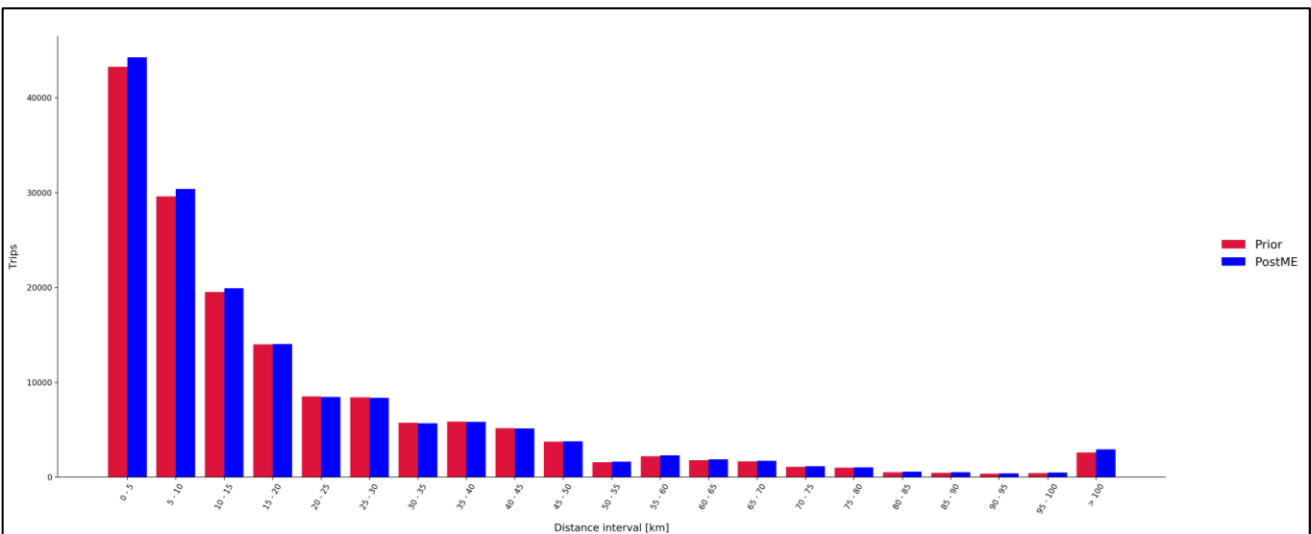
Trip Length Distribution Comparison Graph: PM - Car Business Trips

Car Other Trips

User Class	Metric		AM	PM
Car Other	Mean Travel Distance (km)	Prior	16.32	16.69
		PostME	16.43	17.00
		Difference	+0.7%	+1.9%
	Standard Deviation (km)	Prior	29.79	31.74
		PostME	30.23	32.89
		Difference	+1.5%	+3.6%



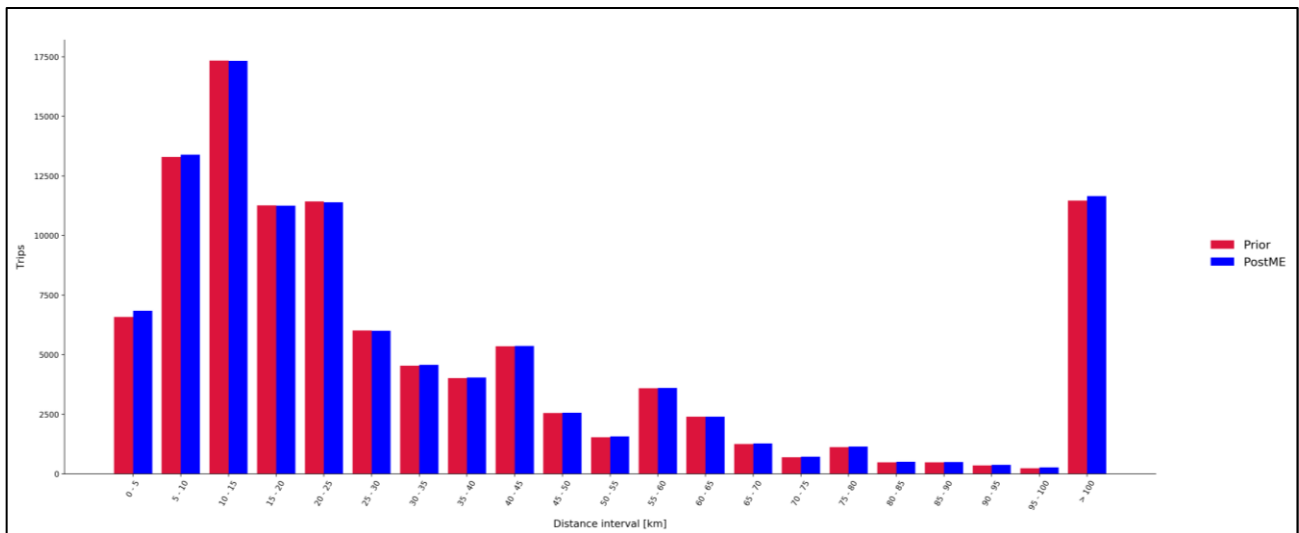
Trip Length Distribution Comparison Graph: AM - Car Other Trips



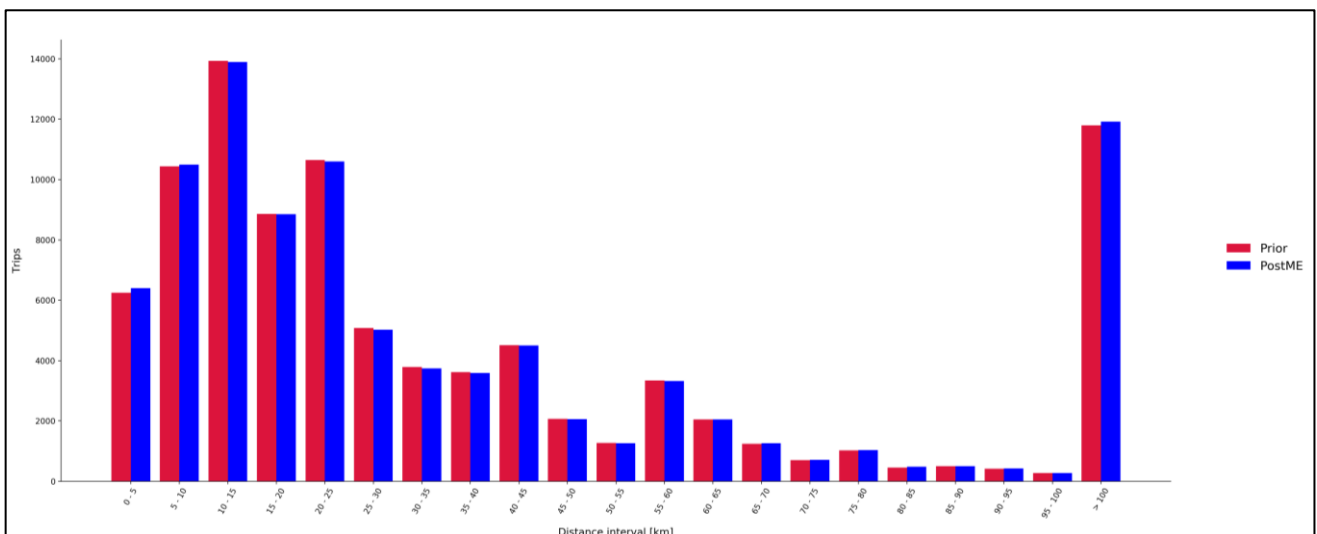
Trip Length Distribution Comparison Graph: PM - Car Other Trips

LGV Trips

User Class	Metric		AM	PM
LGV	Mean Travel Distance (km)	Prior	22.38	25.83
		PostME	22.51	25.92
		Difference	+0.6%	+0.3%
	Standard Deviation (km)	Prior	54.97	61.51
		PostME	55.06	61.68
		Difference	+0.2%	+0.3%



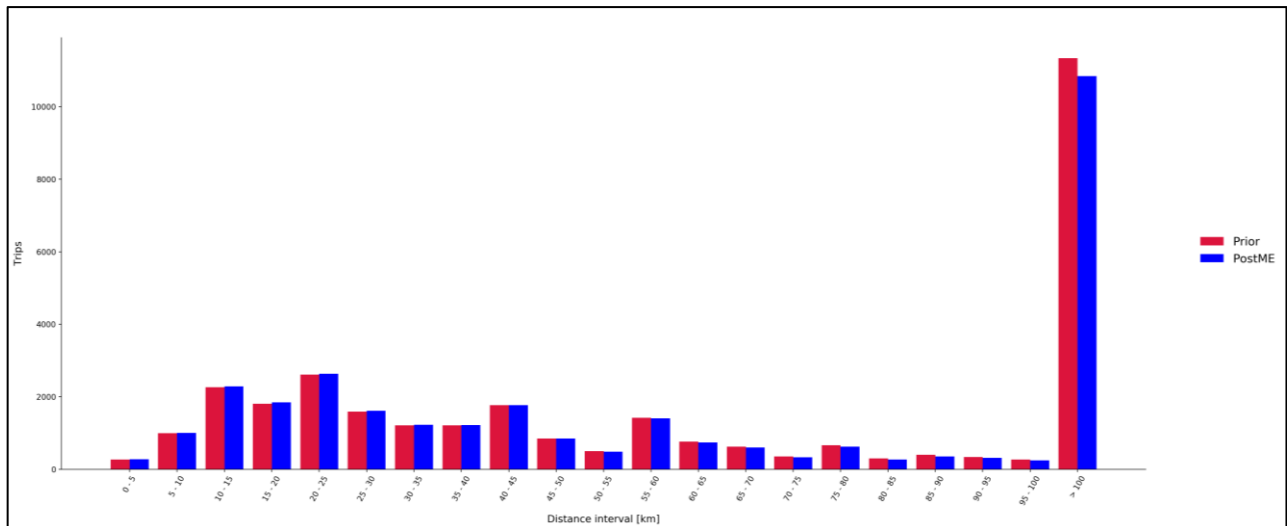
Trip Length Distribution Comparison Graph: AM - LGV Trips



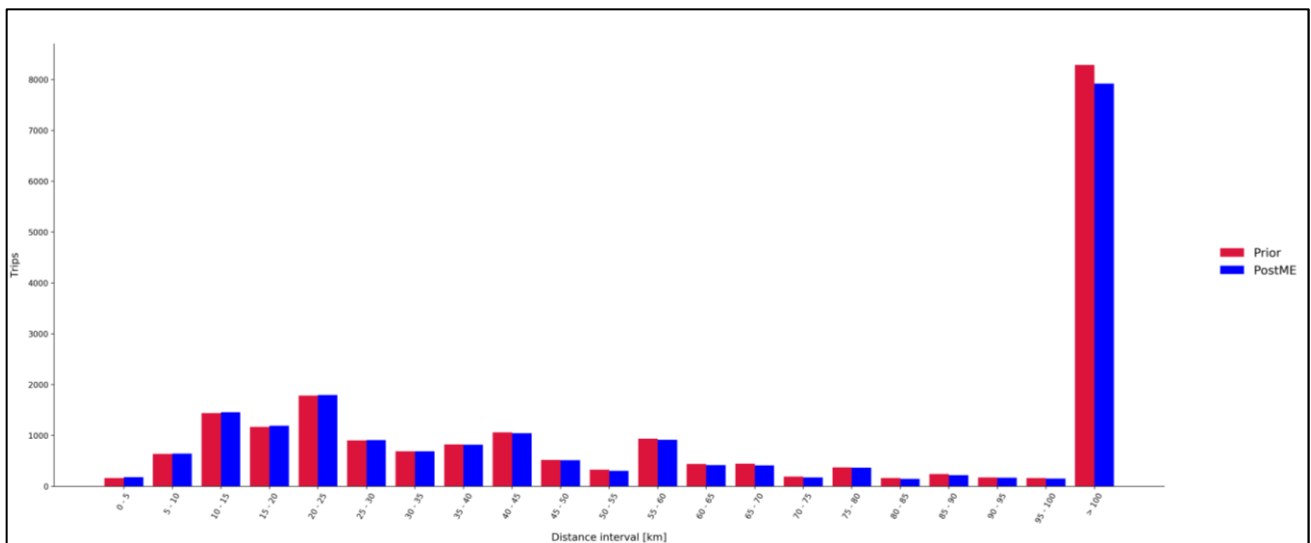
Trip Length Distribution Comparison Graph: PM - LGV Trips

HGV Trips

User Class	Metric		AM	PM
HGV	Mean Travel Distance (km)	Prior	82.17	92.95
		PostME	80.42	91.01
		Difference	-2.1%	-2.1%
	Standard Deviation (km)	Prior	121.58	130.99
		PostME	120.81	130.23
		Difference	-0.6%	-0.6%



Trip Length Distribution Comparison Graph: AM - HGV Trips



Trip Length Distribution Comparison Graph: PM - HGV Trips