

# Swanley Gateway News

The regeneration of 27 to 37 High Street, Swanley



September 2021

## Laying the foundations for a work hub & homes



An artist's impression of the new work hub and homes

Welcome to the first issue of our newsletter. We are Bromley-based construction company Guildmore and we've been appointed by Sevenoaks District Council to build an exciting new work hub and homes at 27 to 37 High Street, Swanley, known locally as the former 'Meeting Point'

The £4 million project is part of the Council's regeneration of the southern gateway to Swanley and compliments other Council supported improvements in the town.

The 250 square metre work hub will provide space for the next generation of Swanley businesses to develop and grow, supporting new jobs, new ways of working and of course the local economy.

Seventeen high-quality homes above the work hub will help to pay for the building works.

The environment is at the heart of the development. The work hub and flats have energy efficient air source heating, electric charging points and cycle parking, all a short walk from Swanley railway station so employees, residents and visitors can travel there by train.

The development will also have access to a communal, wildlife-friendly garden and includes some car parking.

Sevenoaks District Council is funding for the works with support from the Getting Building Fund (South East Local Enterprise Partnership and Kent County Council).

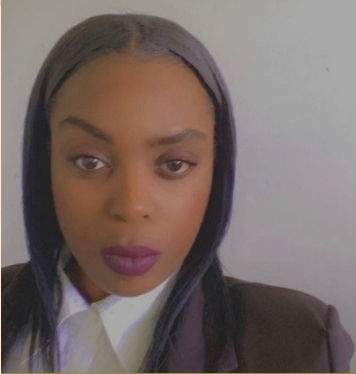
Work began in June and is expected to be finished by July 2022.

We appreciate that, as with any major construction project, there may be some disruption to our neighbours.

Please rest assured, we are taking all possible action to minimise any noise and disturbance. Working hours and deliveries are limited to 8am to 6pm Monday to Friday and 8am to 1pm on Saturdays with no work on Sundays and Bank Holidays.

If you have any concerns about the works, please do not hesitate to contact Josella McCalla, the project's Resident Liaison Officer. To find out more, visit the Council's website [www.sevenoaks.gov.uk/swanleygateway](http://www.sevenoaks.gov.uk/swanleygateway).

## Contact us...



Josella McCalla is Guildmore's Resident Liaison Officer for this project.

Josella is your first port of call if you have any concerns about the works. Josella also has plans to meet local residents and businesses and get involved in local community projects.

If you have any question, contact Josella on **07984 619129** or email [josella.mccalla@guildmore.com](mailto:josella.mccalla@guildmore.com).

## We're a Considerate Constructor!



**Registered site**  
[www.ccscheme.org.uk](http://www.ccscheme.org.uk)

Guildmore is a founder member of the Considerate Constructors Scheme and we take our role very seriously, working hard to minimise the impact of our works on the local community. As part of the project, we will produce regular newsletters to keep you informed about the progress of the works.

## What's happened so far and what's happening next?

Work started in June and our first job was to put up a safety hoarding around the site before we could demolish the existing buildings.

After the redundant buildings were demolished, we put up a temporary safety prop against a neighbouring property.

Levelling the ground and excavation works then followed. As this newsletter went to print, the foundations for the development were being dug and concrete poured.

Once the foundations are complete, you will see the steel frame for the work hub and homes go up in the coming weeks.



Metal reinforcing for the new development's foundations. The props for the neighbouring building can be seen in the background.

## Career opportunities

As part of this project, Guildmore is keen to bring employment and career opportunities to local people in Swanley. In the coming weeks and months, Guildmore will have a number of apprenticeship positions for aspiring carpenters, plumbers, electricians

and decorators plus opportunities for general labourers.

If you or someone you know would like to find out more, please contact Josella McCalla, Guildmore's Resident Liaison Officer [josella.mccalla@guildmore.com](mailto:josella.mccalla@guildmore.com).



**SOUTH EAST**  
LOCAL ENTERPRISE  
PARTNERSHIP



**HM Government GUILDMORE**

